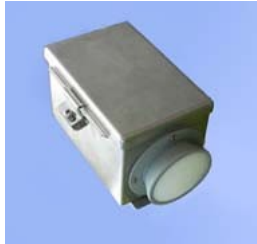


Train Presence Detector



This all weather microwave sensor measures the distance to rail cars in its narrow 10° beam. Cars within a programmable window of 3 m to 25 m are detected. It is normally mounted on the signal pole with its beam perpendicular to the track.

The output is a relay type closure when a train is present within the range window. The output is a contact type closure when a train is present. The maximum distance detected may be adjusted from 9 m to 25 m in 1 m increments.

Features

- All weather operation
- Contact closure output
- Stainless steel case

Specifications

Type	24 GHz FMCW
Range Window	3 m to 25 m (internally programmable window)
Beamwidth	10°
Distance Accuracy	1 m
Power Output	1 milliwatt
Power Required	10 to 18 V dc, 5 Watts
Size/Weight	10 x 11 x 29 cm / 1 kg
Temperature	-20°C to +60°C
Output	Contact closure when train is with range window.



Train Presence Detector