

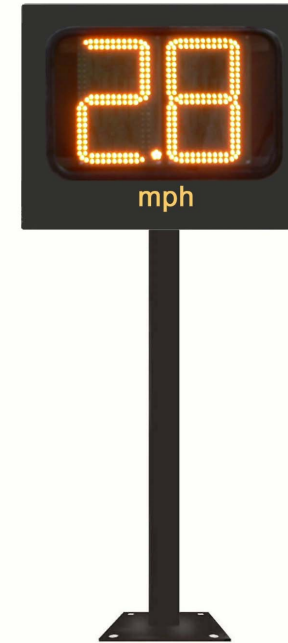
Portal Radar System

Display – 30 cm, 2 digit, 0.0 to 9.9

O'CONNOR

Specifications

Digit Height	30 cm (12 inch)
Type	Bright LED
Display Range	0.0 to 9.9
Color	Amber
Dimming	Automatic: bright in sun, dim at dark
Number of Digits	2 plus decimal point
Visibility Distance	150 m (500 feet)
Environment	Indoor/Outdoor
Bright Angle	50° h x 35° v
Power Required	110 – 220 V ac, 50 – 60 Hz, 1 Amp
Size (approx.)	20 x 61 x 76 cm (8" x 24" x 30")
Weight	16 kg, (35 lbs.)
Temperature	-30°C to +50°C
Input	RS485; 2 digit ASCII, 9600 Baud, 8 bit, no parity, one stop
Case	Black powder painted metal, Lexan window, hinged door with snap locks
Stand (optional)	2 m x 10 cm (6' x 4") rectangular with 4 bolt base mount plate



*Speed Display
12 inch, 2 digit, 0.0 to 9.9*

Portal Radar System

O'CONNOR

Display – 30 cm, 3 digit, 00.0 to 99.9

Specifications

Digit Height	30 cm (12 inch)
Type	Bright LED
Display Range	0.0 to 9.9
Color	Amber
Dimming	Automatic: bright in sun, dim at dark
Number of Digits	3 plus decimal point or comma
Visibility Distance	150 m (500 feet)
Environment	Indoor/Outdoor
Bright Angle	50° h x 35° v
Power Required	110 – 220 V ac, 50 – 60 Hz, 1 Amp
Size (approx.)	20 x 61 x 91 cm (8" x 24" x 36")
Weight	17 kg (38 lbs.)
Temperature	-30°C to +50°C
Input	RS485; 3 digit ASCII, 9600 Baud, 8 bit, no parity, one stop
Case	Black powder painted metal, Lexan window, hinged door with snap locks
Stand (optional)	2 m x 10 cm (6' x 4") rectangular with 4 bolt base mount plate



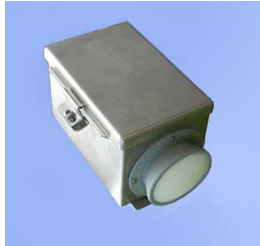
*Speed Display
12 inch, 3 digit, 00.0 to 99.9
with decimal point*



*Speed Display
12 inch, 3 digit, 00.0 to 99.9
with comma*

Portal Radar System

Speed Sensor – 00.0 to 25.0 km/h, RS485 and Frequency outputs



Designed for use in reduced speed areas such as school zones, construction zones, portal areas and train yards, this low cost microwave sensor measures the speed of approaching and receding vehicles, then outputs the value in an RS-485 format. Just add a display for local speed monitoring or send the data to a PC for display and recording. The output is compatible with all Portal Radar System Displays.

Features

- Direction sensing
- Low power consumption
- Small self contained unit with mounting flanges
- FCC Part 15 and CE approved, no license required
- RS485 and Frequency outputs
- Stainless steel enclosure

Specifications

Type	24.125 GHz Stereo Doppler, 4 milliwatts
Range	30 m
Beamwidth	10°
Min-Max Speed	00.1 - 25.0 km/h or 00.1 - 15.0 mph
Mounting Angle	30° to approaching or receding vehicle
Precision	0.1 km/h
Power Required	10 to 16 Vdc, 0.3 A
Size/Weight	10 x 11 x 20 cm / 1.5 kg (4 x 4 x 8 inches/3.5 lbs.)
Enclosure	Stainless steel, weatherproof with 4 bolt flange mount
Outputs	1) RS485, 4 digit ASCII, (speed and + or – for direction), 9600 Baud, 8 bit, one stop, no parity, and 2) Frequency at 560 Pulses/m (14 pulses per inch of movement) standard, others available